

2020 Edition

QUALITY • HONESTY • INTEGRITY

MOBILE & FIXED STATION ANTENNAS



4G-LTE
Telemetry
LMR-Public Safety
Portables
Custom Design

em
wave inc.

VHF Rooftop Mount Antenna.....	3
VHF Rooftop Mount Antenna.....	4
VHF/UHF Rooftop Mount Antenna	4
UHF Rooftop Mount Antenna	5
700/800/900 MHz Antenna	6
"X"-NUT Quarterwave Antenna	7
Mobile Multi-Band Antenna	8
Duplexed Antenna Kits	9
Combination Mounts/WiFi Antenna	10
Combination Mounts/GPS/GLNSS Antenna	11
Mobile/Fixed Station Antenna.....	12
Base & Fixed Station Antenna.....	13
Base & Fixed Station Antenna.....	14
Mounts/Brackets & Cable Assemblies	15
Portable Antennas	16-17
Replacement Parts	18

OUR MISSION

E/M Wave, Inc. is committed to helping our customers communicate through innovative RF and wireless solutions, by exceeding your expectations for quality antenna design, performance, and reliability.

"Finally someone is building a better antenna solution."

M10004 series 132-174 MHz

- O-ring seals for waterproof construction
- Durable Xenoy™ base with TPV over mold dust seal to professionally dress off installation, while providing a grip ring to ease antenna install and removal
- Black molded poly spring with black chrome finish whip adapter

	EMFLX-M10004	EMFLX-M10004-GPI	EM-M10004	EM-M10004-GPI	EM-M10004-LS	EM-M10004-GPI-LS
Frequency Band	132-174 MHz					
VSWR	<1.5:1 at center freq	<1.2:1 at center freq	<1.5:1 at center freq	<1.2:1 at center freq	<1.5:1 at center freq	<1.2:1 at center freq
Gain	3 dB	2 dBi	3 dB	2 dBi	3 dB	2 dBi
Powering Rating	150 W					
Ground Plane Independent	-	YES	-	YES	-	YES
Overall Length (max)	55 7/16 in. (1.408 m)	50 in. (1.17 m)	55 7/16 in. (1.408 m)	50 in. (1.17 m)	55 7/16 in. (1.408 m)	50 in. (1.17 m)
Whip Material	17-7 SS, Black Chrome					
Spring Material	Black molded poly with black chrome finish adapter		Stainless steel, black chrome		-	-
Base Material	Xenoy™ with TPV over mold grip ring					
Mounting App	NMO mount					



EMFLX-M10004 EMFLX-M10004-GPI



EM-M10004-LS
EM-M10004-GPI-LS

M10014 series 144-174 MHz

- O-ring seals for waterproof construction
- Durable Xenoy™ base with TPV over mold dust seal to professionally dress off installation, while providing a grip ring to ease antenna install and removal
- Black molded poly spring with black chrome finish whip adapter

	EMFLX-M10014	EMFLX-M10014-GPI	EM-M10014	EM-M10014-GPI	EM-M10014-LS	EM-M10014-GPI-LS
Frequency Band	144-174 MHz					
VSWR	<1.5:1 at center freq	<1.2:1 at center freq	<1.5:1 at center freq	<1.2:1 at center freq	<1.5:1 at center freq	<1.2:1 at center freq
Gain	3 dB	2 dBi	3 dB	2 dBi	3 dB	2 dBi
Powering Rating	150 W					
Ground Plane Independent	-	YES	-	YES	-	YES
Overall Length (max) @144 MHz	46 in. (1.17 m)	45 3/4 in. (1.16 m)	49 3/8 in. (1.25 m)	45 3/4 in. (1.16 m)	49 3/8 in. (1.25 m)	45 3/4 in. (1.16 m)
Whip Material	17-7 SS, Black Chrome					
Spring Material	Black molded poly with black chrome finish adapter		Stainless steel, black chrome		-	-
Base Material	Xenoy™ with TPV over mold grip ring					
Mounting App	NMO mount					



EMFLX-M10014 EMFLX-M10014-GPI



EM-M10014-LS
EM-M10014-GPI-LS

Xenoy™ is a trademark of SABIC

VHF Rooftop Mount Antenna

EMFLX-M10008-WB **144-174 MHz** Wide Band

No Tuning Required



EMFLX-M10008-WB

- VHF Wide Band, fixed length, quarter-wave, *No Tuning Required*
- O-ring seals for waterproof construction
- Durable Xenoy™ base with TPV over mold dust seal
- Black molded poly spring with black chrome finish whip adapter

Frequency Band	144-174 MHz
VSWR	<1.8:1
Gain	2 dBi gain
Powering Rating	150 W
Overall Length	18-7/8 inch (479.4mm)
Whip Material Finish	17-7 SS, Black Chrome
Base Material	Xenoy™ w/TPV over mold grip ring
Mounting Application	NMO mount



VHF/UHF Rooftop Mount Antenna

M10001 series **108-520 MHz** Quarterwave

e/m-Flex™



EMFLX-M10001

- O-ring seals for waterproof construction
- Broad Band, Field Tunable
- Durable Xenoy™ base with TPV over mold dust seal to professionally dress off installation, while providing a grip ring to ease antenna install and removal

	EMFLX-M10001	EM-M10001	EM-M10001-LS
Frequency Band	108-520 MHz		
VSWR	(15 MHz Bandwidth @150 MHz) <2.0:1 (50 MHz Bandwidth @450 MHz) <1.5:1 (100 MHz @450 MHz) <2.0:1		
Gain	2 dBi		
Powering Rating	150W		
Overall Length	@108 MHz: 29 in. (737mm) @150 MHz: 19¾ in. (502mm) @450 MHz: 7¾ in. (197mm)		
Whip Material	17-7 SS, Black chrome		
Spring Material	Black molded poly with black chrome finish adapter	17-7 Stainless steel, black chrome	—
Base Material	Xenoy™ with TPV over mold grip ring		
Mounting App	NMO Mount		



EM-M10001-LS

EM-M10001

Xenoy™ is a trademark of SABIC

M10003 series 420-470 / 470-520* / 380-520 MHz

- 420-470 MHz and 380-520 MHz (GPI model)
- O-ring seals for waterproof construction
- Durable Xenoy™ base with TPV over mold dust seal to professionally dress off installation, while providing a grip ring to ease antenna install and removal



EMFLX-M10003
EMFLX-M10013*

EMFLX-M10003-GPI

	EMFLX-M10003	EMFLX-M10003-GPI	EM-M10003	EM-M10003-GPI	EM-M10003-LS	EM-M10003-GPI-LS
Frequency Band (Tunable Range)	420-470 MHz	380-520 MHz	420-470 MHz	380-520 MHz	420-470 MHz	380-520 MHz
VSWR	<1.5:1	<1.2:1 across operational bandwidth	<1.5:1	<1.2:1 across operational bandwidth	<2:1	<2.2:1
Gain	3 dB	2 dBi	3 dB	2 dBi	3 dB	2 dBi
Powering Rating	150 W					
Ground Plane Independent	-	YES	-	YES	-	YES
Overall Length (max)	14 3/8 in. (365.1 mm)	16 1/8 in. (409.6 mm)	14 3/8 in. (365.1 mm)	16 1/8 in. (409.6 mm)	14 3/8 in. (365.1 mm)	16 1/8 in. (409.6 mm)
Whip Material	17-7 SS, Black Chrome					
Spring Material	Black molded poly with black chrome finish adapter		Stainless steel, black chrome		-	-
Base Material	Xenoy™ with TPV over mold grip ring					
Mounting App	NMO mount					

*EMFLX-M10013 same specifications as EMFLX-M10003 except 470 - 520 MHz



EM-M10003

EM-M10003-LS

EM-M10003-GPI

EM-M10003-GPI-LS

M10007 series 420-470 / 440-480 MHz

- 420-470 MHz and 440-480 MHz (GPI model)
- One-piece 17-7 SS Open Coil Whip for Reliability and Performance
- O-ring seals for waterproof construction
- Durable Xenoy™ base with TPV over mold dust seal to professionally dress off installation, while providing a grip ring to ease antenna install and removal



EMFLX-M10007

EMFLX-M10007-GPI

	EMFLX-M10007	EMFLX-M10007-GPI	EM-M10007	EM-M10007-GPI	EM-M10007-LS
Frequency Band (Tunable Range)	420-470 MHz	440-480 MHz (no tuning required)	420-470 MHz	440-480 MHz (no tuning required)	445-470 MHz
VSWR	<1.5:1	<2:1	<1.5:1	<2:1	<1.5:1
Gain	5 dB	5 dBi	5 dB	5 dBi	5 dB
Powering Rating	150 W				
Ground Plane Independent	-	YES	-	YES	-
Overall Length (max)	38 3/8 in. (975 mm)	31 1/4 in. (794 mm)	38 3/8 in. (975 mm)	31 1/4 in. (794 mm)	38 3/8 in. (975 mm)
Whip Material	17-7 SS, Black Chrome				
Spring Material	Black molded poly with black chrome finish adapter		17-7 Stainless steel, black chrome		-
Base Material	Xenoy™ with TPV over mold grip ring				
Mounting App	NMO Mount				



EM-M10007

EM-M10007-GPI

EM-M10007-LS

Xenoy™ is a trademark of SABIC

700 / 800 / 900 MHz

	EM-M11005	EM-M11003	EM-M11008	EM-M11004	EM-M11014
Frequency Band	746-960 MHz	763-869 MHz	806-894 MHz	890-960 MHz	806-894 MHz
VSWR	<1.5:1	<2:1	<2:1	<2:1	<2:1
Gain	2 dBi	5 dBi	5 dBi	5 dBi	6 dBi
Powering Rating	100 W				
Overall Length	4 1/4 in. (108 mm)	14 1/2 in. (368 mm)	14 1/2 in. (356 mm)	12 1/2 in. (318 mm)	22 1/4 in. (565 mm)
Whip Material	17-7 Stainless Steel, Black Chrome				
Base Material	Xenoy™ with TPV over mold grip ring				
Mounting App	NMO mount (sold separately)				



Applications: Public Safety/LMR/P25/TETRA, ISM/SCADA/Utilities, Railroad/Train Control

- Rugged One-Piece SS Radiator with Limited "Lifetime Warranty"
- Durable and Highly Conductive Black Chrome Finish
- Tightly Wound Phasing Coil Delivers Flexibility while Resisting Low Hanging Obstructions
- Open Coil Whip Affords Higher Power Handling Capability (excluding EM-M11005)
- Brass BETA's Increase Operational Bandwidth up to 15%
- Durable Xenoy™ Base with TPV Over Mold Grip Eases Antenna Install and Removal

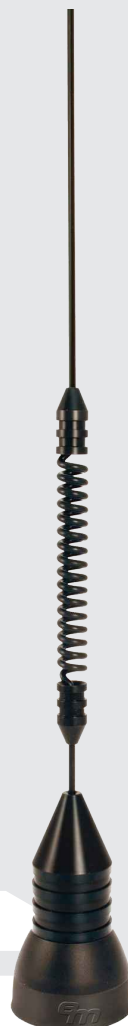
EM-M11005 746-960 MHz



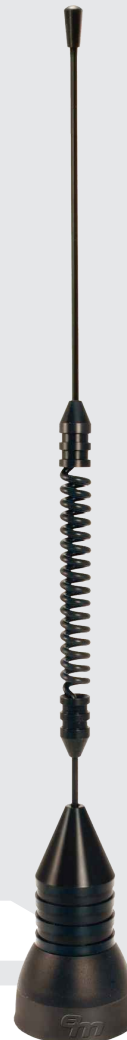
EM-M11003 763-869 MHz



EM-M11008 806-894 MHz



EM-M11004 890-960 MHz



EM-M11014 902-928 MHz



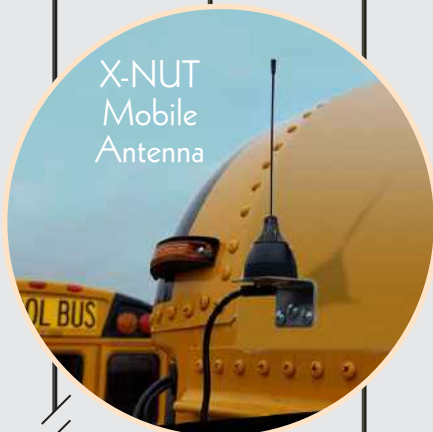
Xenoy™ is a trademark of SABIC

"X"-NUT™ Quarterwave Antenna

Exploded view showing all "X"-Nut components



Gain	0 dBd (2.0 dBi)
VSWR	1.5:1 typical, 1.9:1 max (except EM-MX0152, 1.5:1 typical, 2.0:1 max)
Powering Rating	100 W
Polarization	Linear, Vertical
Ground Plane	Required
Whip Material Finish	300 Series stainless steel, black chrome plated
Base Material	Xenoy™ w/TPV over mold grip ring
Mounting Application	NMO mount (sold separately)
Corrosion	Salt and UV resistant



X-NUT
Mobile
Antenna

- Stylish high-impact, dual shot Xenoy™/TPV base
- Insert molded antenna adapter and brass NMO ring truly eliminates mating concerns of dissimilar metals
- Dual seal construction for weatherproof protection
- Delivers up to 10% more operational bandwidth than comparable low-end chrome nut designs
- Durable black chrome finish for high conductivity and quality appearance
- Easy hand-installation for positive RF connection... No tools required!

EM-MX0890 890-960 MHz
Height: 3½ in. (89 mm)

EM-MX0746 746-894 MHz
Height: 4 in. (102 mm)

EM-MX0450 450-520 MHz UHF
Height: 6¾ in. (169 mm)

EM-MX0406 380-430 MHz UHF
Height: 7¼ in. (183 mm)

EM-MX0162 162-174 MHz VHF
Height: 17¼ in. (435 mm)

EM-MX0152 152-162 MHz VHF
Height: 18¼ in. (464 mm)

EM-MX0108-FT 108-960 MHz Field Tunable
Height: 31¼ in. (806 mm)

Xenoy™ is a trademark of SABIC

Multi-Band Mobile Antenna

LMR and LTE-Poly Pro Flexible Antennas

EM-M20007 698-960 MHz/1710-2700 MHz
EM-M22001 for UHF/700-900 MHz NMO Apps



EM-M20007

EM-M22001

Patent No. US 9,520,640

- Capacitive Coupled Design Optimizes LTE and UHF Signal Performance while Maintaining Low-Profile Tapered Form Factor
- Flexible Elastomeric Polymer Housing Resists High Speed Impact and Damage from Low Hanging Obstructions
- Dust and O-Ring Seals for Reliable High Pressure Car Wash and Waterproof Performance (IP66)
- Next Generation LTE Model Incorporates Expanded Frequency Range and Reduced Height
- Rugged "All Brass" Construction with Black Chrome Finish and Silver Plated Contact Maximizing Conductivity and System Reliability

	EM-M20007	EM-M22001
Frequency Band	698-960 MHz / 1710-2700 MHz	450-520 MHz / 746-960 MHz
VSWR	1.5:1 typical, 2:1 max	
Gain	2 dBi @ 698-960 MHz 3 dBi @ 1710-2100 MHz 5 dBi @ 2100-2700 MHz	2 dBi @ 450-520 MHz 2 dBi @ 746-960 MHz
Powering Rating	100 W	150 W
Ground Plane	Required	
Mechanical Specifications		
Height	3.63 in. (92mm)	4.95 in. (125.8 mm)
Diameter	1.6 in. (40mm)	
Radiator Material	Brass / black chrome plating	Stainless Steel & brass w/black chrome
Radome Material	Elastomeric Polymer, proprietary	Xenoy™
Mounting Application	NMO mount type (sold separately)	

Multi-Band Duplexer

EM-MBD41000-NJ 100-180 MHz/380-870 MHz



EM-MBD41000-NJ

- N-Jack Connectors
- Low Insertion Loss, All Bands
- High Power Handling
- 50 dB Port-to-Port Isolation
- Full Duplex/Bi-Directional Operation for Signal Combining or Splitting
- Specifically Designed to Augment Multi-Band LMR Applications

Frequency Band (VHF)	100-180 MHz
Frequency Band (UHF-870)	380-870 MHz
VSWR (All Ports)	≤1.3:1
Isolation (VHF↔UHF-870)	≥50 dB
Insertion Loss	≤0.2 dB (100-180 MHz) ≤0.3 dB (380-520 MHz) ≤0.5 dB (746-870 MHz)
Power Rating	150W (100-180 MHz) 100W (380-520 MHz) 75W (746-870 MHz)
Dimensions	3.27 x 2.1 x 1.1 in. (83 x 53 x 28 mm)
Connector	Type N, female
Mounting	Interior only, #8 PHMS

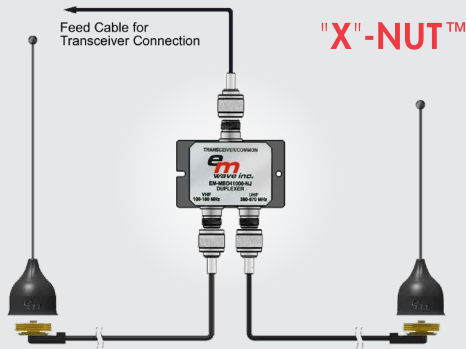
Xenoy™ is a trademark of SABIC



Duplexed Antenna Kits

- Complete Dual-Band and Tri-Band expandable coverage for all LMR/Public Safety Bands operating in VHF 108-174 MHz, UHF 380-520 MHz and 746-870 MHz
- Optimal in-band performance with precision 50 ohm impedance, low insertion loss and field tunable VHF frequency selectivity
- Scalable to meet system performance requirements for all bands:
 - Frequency, field tune antennas including our most popular EM-Flex and X-Nut models
 - VSWR & Bandwidth
 - Gain
- Accommodates user/installer preference for 1/4 wave, 1/2 wave, Dual Element Collinear and GPI antennas without compromising required system gain

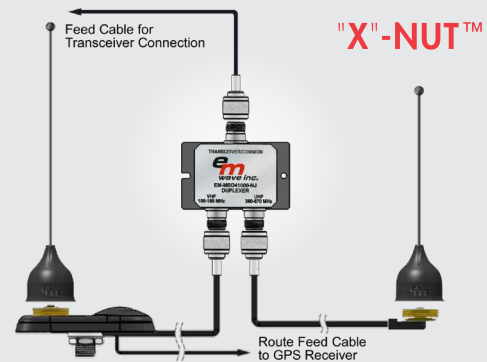
Dual Band EM-MBD41002



- 108-174 MHz / 380-870 MHz
- Dual Band configuration for all LMR/Public Safety Bands, VHF through 870 MHz

Kit Includes (no substitutions):	Qty		Qty
Duplexer (VHF/UHF-870 MHz)	1	RG-58/U NMO Cable	1
N Male Connectors	3	EM-MX0108-FT Antennas	2
Low Loss 195 NMO Cable	1	RG-58/U Feed Cable	1

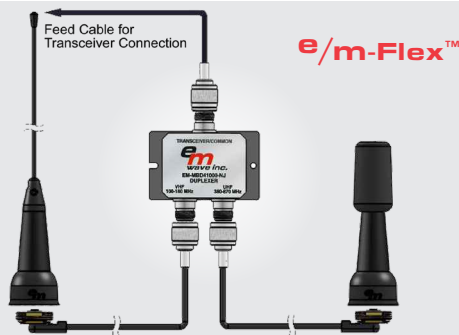
Dual Band w/GPS EM-MBD41003



- 108-174 MHz / 380-870 MHz / + GPS
- Dual Band configuration for all LMR/Public Safety Bands, VHF through 870 MHz including GPS

Kit Includes (no substitutions):	Qty		Qty
Duplexer (VHF/UHF-870 MHz)	1	EM-MG11006-SP Mount NMO/GPS	1
N Male Connectors	3	EM-MX0108-FT Antennas	2
Low Loss 195 NMO Cable	1	RG-58/U Feed Cable	1

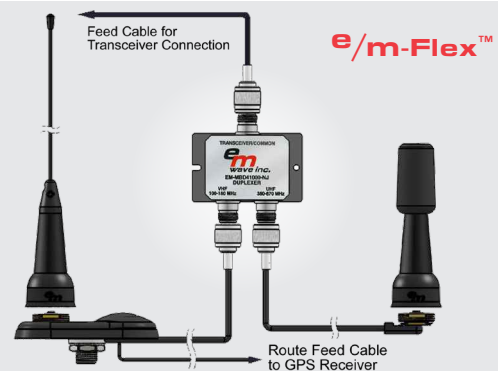
Tri Band EM-MBD41005



- 108-174 MHz / 450-520 MHz / 746-870 MHz
- Complete Tri-Band coverage for all LMR/Public Safety Bands operating in VHF 108-174 MHz, UHF 450-520 MHz and 746-870 MHz

Kit Includes (no substitutions):	Qty		Qty
Duplexer (VHF/UHF-870 MHz)	1	EM-M11001-058 RG-58/U NMO Cable	1
N Male Connectors	3	EMFLX-M10001 Field Tune Antenna	1
EM-M11001-195 LL195 NMO Cable	1	RG-58/U Feed Cable	1
EM-M22001 (UHF/700-900 MHz)	1		

Tri Band w/GPS EM-MBD41004



- 108-174 MHz / 450-520 MHz / 746-870 MHz / +GPS
- Complete Tri-Band coverage for all LMR/Public Safety Bands operating in VHF 108-174 MHz, UHF 450-520 MHz and 746-870 MHz including GPS

Kit Includes (no substitutions):	Qty		Qty
Duplexer (VHF/UHF-870 MHz)	1	EM-MG11006-SP Mount NMO/GPS	1
N Male Connectors	3	EMFLX-M10001 Field Tune Antenna	1
EM-M11001-195 LL195 NMO Cable	1	RG-58/U Feed Cable	1
EM-M22001 (UHF/700-900 MHz)	1		

Combination Mount/WiFi Antenna



Shark Fin Combination: NMO + WiFi or NMO + WiFi Antenna + GPS/GLNSS Antennas



EM-M51001
EM-MG51002-SP

- UV stabilized, black, high impact ASA housing
- Rugged aluminum die cast base for high strength mechanical mounting and reliability
- Silicone rubber gasket and dual O-ring seals for water resistant installation (IP66)
- Premium double shielded Low Loss 195 cable
- FAKRA RF interconnections for reliable, vibration resistant performance
- Standard 3/4 in. hole mount
- Reduced surface area mounting minimizes ingress resistance

EM-M51001 and EM-MG51002-SP

NMO Mount Electrical Specifications		Mechanical Specifications	
Frequency Band	30 – 1000 MHz	Dimensions	Height: 2.76 in (70.2 mm) Width: 2.2 in (55.9 mm) Length: 4.5 in (114.3 mm)
VSWR ¹	<1.5:1 Typical	Mounting Application	Bulkhead, 3/4 in Thru-Hole
Impedance	50Ω	Ant. Cable NMO (FAKRA)	RG-58/U; 12 in (0.3 m)
Cable Insertion Loss	2 dB, max	Ant. Cable WiFi (FAKRA)	RG-316/U 12 in (0.3 m)
Power Rating	100 W, max	Jumper Cables Cable, WiFi Cable, NMO	FAKRA to QMA* LL195 Type; 16 ft (4.9 m) RG-58/U; 16 ft (4.9 m)
WiFi Antenna Electrical Specifications			
Frequency Band	2.4-2.5 GHz, 5.2-5.9 GHz		
Antenna VSWR	2:1 max		
Impedance	50Ω		
Power Rating	15 W, max		
Gain	5 dBi @ 2.4-2.5 GHz, 7 dBi @ 5.2-5.9 GHz		
Polarization	Vertical		

EM-MG51002-SP GPS/GLNSS LNA and Filter

GPS Electrical Specifications	
Frequency Band	1575 – 1610 MHz
Input/Output VSWR	2.0:1 max
Gain	28 dB typical
Noise Figure (dB)	1.5 typical, 2.0 max
Oper. Voltage (Vdc) Current Drain (Idc)	2.7-5.5 V 6.0 - 16.0 mA max
Filter Type	SAW
Attenuation	28 dB min (DC - 1522.5 MHz) 30 dB min (1662.5-3000 MHz)
Power Handling	10 W (Input)
Passive Antenna Element	
Center Frequency	1592.5 MHz
Bandwidth	35 MHz
Antenna VSWR	2:1 max
Polarization	RHCP
Cable/Connector	RG-174/U 17 ft (5.1 m) / SMA Plug

1. Antenna / Frequency Dependent

*Alternate connector options available. Specifications subject to change without notification.

Combination Mounts / GPS/GLNSS Antenna



NMO/GPS/GLNSS Combination Mount

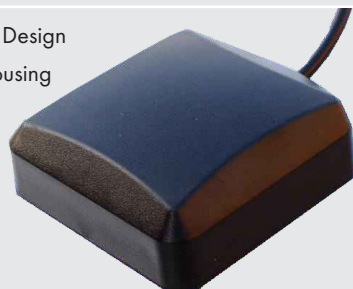
- Low-Profile aesthetics for reduced visibility
- UV Stabilized, High Impact Xenoy™ housing
- Rugged aluminum die cast base for high strength mechanical mounting and reliability
- Silicone Rubber gasket and dual O-ring seals for waterproof, high pressure car wash (IP66) applications



EM-MG11006-SP(-195)
EM-MG11022-SP(-195)

Magnet Mount GPS/GLNSS adhesive option available

- Low-Profile, Rugged, Compact Design
- High-Impact Polycarbonate Housing UV Stabilized
- IP67 Rated
- High Rejection SAW Filter
- Low Current Consumption
- High strength magnetic mount
- SMA male plug
- 16.4 ft (5 m) RG-174/U Cable



EM-MG13004-SP

GPS/GLNSS Antenna



EM-AG13007-NJ
EM-AG13007-SP-174
EM-AG13007-NP

- Low-Profile, Rugged, Compact Design
- Precision timing for fixed point networks
- Asset location and tracking
- Rated IPX7



	EM-AG13007-SP-174	EM-AG13007-NJ	EM-AG13007-NP
Frequency Band	1575-1610 MHz		
VSWR	<2.5:1		
Gain	30 ± 3 dB	30 ± 3 dB	34 ± 3 dB
Noise Figure	1.5 dB		
Cable Type	RG-174	N/A	N/A
Connector	SMA (m)	N Jack (f)	N male plug
Mounting Application	Bulkhead, 5/8 in. thru-hole		N-female bulkhead
ESD Protection	15kV		

	EM-MG11006-SP EM-MG11006-SP-195	EM-MG11022-SP EM-MG11022-SP-195
	GPS (L1) LNA	GPS/GLNSS LNA
Frequency Band	1575.42 ± 3 MHz	1575-1615 MHz
VSWR	<2.0:1	
Gain	30 dB Typical at 5 Vdc	28 dB Typical
Noise Figure	2.0 dB max	1.5 typical, 2.0 dB max
Oper. Voltage (Vdc)	3.0 -5.5 V	2.5 - 5.5 V
Current Drain (Idc)	6.0 -20.0 mA	5.0 - 20.0 mA max
Filter Type	SAW	
Attenuation	35 dB min (L1+50 MHz) 45 dB min (L1 +100 MHz)	28 dB min (DC-1522.5 MHz) 30 dB min (1662.5-3000 MHz)
Power Handling, Input	10W	
Connector	SMA Plug	
Cable	RG174	
Passive Antenna Element		
Center Freq Band	1575.42 MHz	1592.5 MHz
Antenna VSWR	1.5:1 max	2.:1 max
Gain	3 dBic	4 dBic
Polarization	RHCP	
Common NMO Mount Specifications		
Frequency Band	30 –1000 MHz	
VSWR	1.5:1 typical	
Powering Rating	150 W max	
Overall Length	4.5 in. (114.3mm)	
Mounting Application	Bulkhead, ¾ in. thru-hole	
Connector	Sold separately	
Cable	RG58/U (standard) or Low Loss 195 type (suffix -195)	

Xenoy™ is a trademark of SABIC

Mobile/Fixed Station Antenna

Mobile/Fixed Station Antenna

ISM Band 902-928 MHz



EM-A11015 Black EM-A11016 White EM-A11015-SP Black EM-A11016-SP White

- Tamper resistant bulkhead mount type
- Low Profile: Minimizes visual impact for interior / exterior fixed point applications
- Rugged dual seal design for exterior mobile and fixed point installations where ultra-reliable waterproof performance is required
- UV stabilized, high impact radome
- Silicone compression pad provides maximum weatherproof seal against the bulkhead

	EM-A11015 EM-A11016	EM-A11015-SP EM-A11016-SP
Frequency	902-928 MHz	
VSWR	1.5:1, max	
Gain	3 dBi	
Power Rating	10 W	
Polarization	Linear, vertical	
E-Plane	55°, nominal	
H-Plane	Omnidirectional	
Mechanical Specifications		
Height	3 in. (76.2 mm)	
Diameter	1.67 in. (42.4 mm)	
Radiator	PCB	
Housing Material	Xenoy™ / ASA	
Mounting Application	5/8 DD x 1/4 in. (6.35 mm) max, Bulkhead/panel mount	3/8 in. (M-10) Hole, Bulkhead
Cable	2 ft (610 mm) Low Loss 100	Sold separately
Connector	N Jack (female)	SMA Plug

Mobile/Fixed Station Antenna

LTE

Broadband/Multiband

698-960 MHz
1710-2200 MHz
2200-2700 MHz



EM-A20003-SP Black EM-A20004-SP White

- LTE/4G performance
- Surface mount applications
- Aesthetic/tamper resistant design
- Low-profile to minimize visual impact
- UV stabilized, high impact radome

Broadband/Multiband

746-960 MHz
1710-2200 MHz
2200-2700 MHz



EM-A40001 Black EM-A40002 White

- LTE, LMR, Cellular/PCS, UMTS, WiFi, Wimax
- Tamper resistant bulkhead mount type
- Low profile for interior/exterior fixed point applications
- Rugged dual seal design for exterior mobile and fixed point installations where ultra-reliable waterproof performance is required seal against the bulkhead
- O-ring seal for reliable waterproof construction and installation

	EM-A20003-SP EM-A20004-SP	EM-A40001 EM-A40002
Freq Band (1)	2 dBi Gain @ 698-960 MHz	2 dBi Gain @ 746-960 MHz
Freq Band (2)	2 dBi Gain @ 1710-2200 MHz	
Freq Band (3)	3.5 dBi Gain @ 2200-2700 MHz	
VSWR	<2.2:1 @ 698-710 MHz <2:1 @ 710-960 MHz <2:1 @ 1710-2700 MHz	2:1, max
Power Rating	10 W	
Polarization	Linear, vertical	
E-Plane	50°, nominal	35-50°, nominal
H-Plane	Omnidirectional	
Mechanical Specifications		
Height	3 in. (76.2 mm)	
Diameter	1.67 in. (42.4 mm)	
Radiator	PCB	
Housing Material	Xenoy™ / ASA	
Mounting Application	3/8 in. (M-10) Hole, Bulkhead	5/8 DD x 1/4 in. (6.35 mm) max, Bulkhead/panel mount
Cable	2 ft (610 mm) Low Loss 100	Sold separately
Connector	SMA Plug	N Jack (female)

Xenoy™ is a trademark of SABIC

Base & Fixed Station Antenna

	EM-B40004-NJ	EM-B42001-NJ
Frequency Band	698-2700 MHz	698-6000 MHz
VSWR	698-760 MHz <1.8:1 typ, 2:1 max	
	760-960 MHz <1.5:1 typ, 1.6:1 max	760-3700 MHz <1.5:1 typ, 1.6:1 max
	1710-2700 MHz <1.3:1 typ, 1.5:1 max	3700-6000 MHz 2:1 max
Gain:	698-960 MHz	2 dBi
	1710-2100 MHz	3 dBi
	2100-2700 MHz	5 dBi
	3500-3700 MHz	3.5 dB
	5200-5900 MHz	2.5 dB
E-Plane HPBW	80°, typical	
H-Plane HPBW	Omnidirectional	
Polarization	Vertical	
Power Handling	50 W	
PIM Rating (2x43dBm)	<-150 dBc (B40005 & B42002 only)	
Mechanical Specifications		
Height, as mounted	4.5 in (114.3 mm)	
Width Dia.	8 in (203 mm)	
Mounting Hole Dia.	0.7 in (18 mm)	
Mounting Surface	1.375 in (35 mm) max thickness	
Weight (installed)	0.75 lb (0.34 kg)	
Mounting App / Type	Direct ceiling mount, thru-Hole	
Mounting Bracket Kit	EMBKT-IDAS40004 (optional)	
Connector Type	N Type, Jack	
Cable Type, Length	RG-141 Teflon Type, 10 in (254mm)	

Ground plane not required

Multi/Wide Band iDAS Indoor Ceiling Mount Antenna

698-2700 MHz / 698-6000 MHz

- LTE/4G/5G performance
- Surface mount applications
- Aesthetic/tamper resistant design
- Low-profile to minimize visual impact
- UV stabilized housing

LTE



EM-B40004-NJ

EM-B42001-NJ

EM-B40005-NJ ← PIM Rated → EM-B42002-NJ



EMBKT-IDAS40004

- Twist-Lock mounting bracket for fixed surface mount applications



Fiberglass Base Station Antenna

EM-BFG11905-NJ
EM-BFG11905-NP
900 MHz

- High input power handling
- All brass/silver plated feed and radiator structure
- High strength filament wound fiberglass radome (White)
- Includes hardware for 1 1/2 inch offset pipe mast mounting

	EM-BFG11905-NJ	EM-BFG11905-NP
Frequency Band	902-928 MHz	
VSWR	<2:1	
Gain	5 dBi	
Power Rating	100 W	20 W
Polarization	Vertical	
Horizontal HPBW	Omnidirectional	
Connector	Type N Jack	N Plug
Height	20.7 in (525 mm)	20.78 in (528 mm)
Width (dia.)	1.2 in (31 mm)	0.8 in (20 mm)



EM-BFG11905-NJ

EM-BFG11905-NP

Fiberglass Base Station Antenna

EM-BFG40006-NJ
698-960/1710-2500 MHz, 2dBi 4G/LTE

- High efficiency performance all LTE bands 698-2500 MHz
- High input power handling
- All brass / silver plated feed and radiator structure
- High strength filament wound fiberglass radome (White)
- Includes hardware for 1 1/2 inch offset pipe mast mounting

LTE

Frequency Band	698-960/ 1710-2500 MHz
VSWR	<1.8:1 typ, 2:1 max
Gain	2 dBi / 3 dBi
Power Rating	100 W
Polarization	Vertical
Horizontal HPBW	Omnidirectional
Vertical HPBW	65 - 72°, typical
Connector	Type N Jack
Height	18.1 in (459 mm)
Width (dia.)	1.6 in (41 mm)



EM-BFG40006-NJ

Base & Fixed Station Antenna

GPS/GLNSS (L1) Timing Antenna 1574.4-1610 MHz



EM-BGT13005-TJ



EM-BGT13006-TJ
(includes mast mount kit)

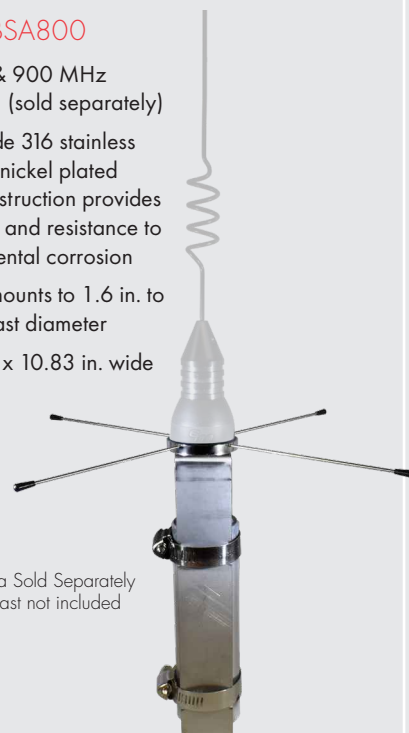
- High selectivity dual filter RF architecture eliminates high power RFI operating within multi-located base station environment
- Impact resistant ASA radome
- Rugged die-cast aluminum base
- Integrated Bulkhead, TNC Jack
- IP67 Rated
- 3/4 in. NPT and 1"-14 marine mount compatible
- UV resistant/cool gray for reduced visibility

Frequency Band	1574.4-1610 MHz
VSWR	<2.0:1
Gain	32 ± 3 dB at 5 V
Noise Figure	3.1 dB typ, 3.5 dB max
Oper. Voltage, Vdc	2.7 - 5.5 V
Current Drain, Idc	7-13 mA ty, 15 mA max @5V, high temp
Rejection Out of Band	Up to 70 dB
DC Injection	Coaxial feed cable center conductor
Mechanical Specifications	
Height	4.88 in. (124 mm)
Width	3.25 in. (83 mm)
Connector	TNC Jack
Mounting App	Pole/mast mount

Ground Plane Kit

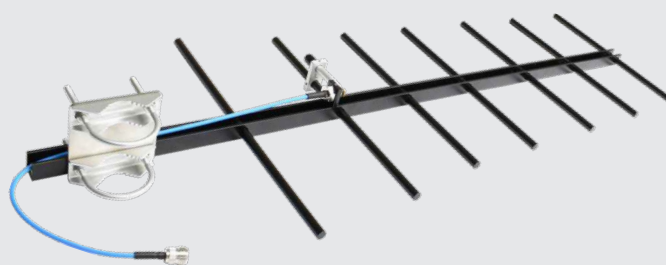
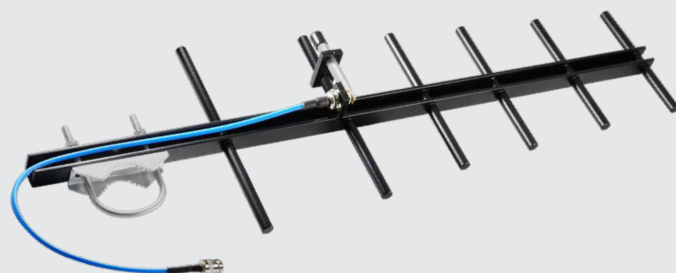
EMBKT-BSA800

- For 800 & 900 MHz Antennas (sold separately)
- High grade 316 stainless steel and nickel plated brass construction provides durability and resistance to environmental corrosion
- Directly mounts to 1.6 in. to 2½ in. mast diameter
- 8 in. high x 10.83 in. wide



NMO Antenna Sold Separately
Mounting Mast not included

Yagi Fixed Station Antenna



	EM-B11410 7 Element	EM-B11809 6 Element	EM-B11909 6 Element
Frequency Band	450-470 MHz	760-870 MHz	890-960 MHz
VSWR	<1.6:1, typical, 2:1 max	<1.5:1, typical, 2:1 max	
Gain	10 dBi	9.5 dBi	
Powering Rating	150 W	125 W	
Dimensions	35.4 x 12.9 x 1.65 in. (900 x 328 x 42mm)	24x 7.52x 1.65 in. (610x 191x 42mm)	
Antenna Material	6000 Series Aluminum / Black powder coat finish		
Mounting Material	Stainless Steel & Steel / Dacron Finish		
Mounting Application	Pole/Mast Mount		
Cable / Connector Type	RG-141 UV & Plenum type cable / N Jack		

- Rugged Aluminum Construction
- UV and Environmentally Resistant Black Powder Coat Finish
- Boom: 3/4" 6063 Aluminum
- Radiators: 3/8" 6061 Aluminum, Solid Rod
- V or H Polarization Mountable
- Mounting Hardware Included
- Integrated Feed Cable, RG-141 Plenum Type



Welded Elements

Mounts, Brackets & Cable Assemblies

Base Station Conversion Adapter for GPI Antennas

- Frequency independent operation for all NMO type antennas
- Rugged all brass construction with bright nickel plating
- Integrated NMO sealing surface eliminates ingress potential between antenna and mounting surface or bulkhead
- Integrated bulkhead O-ring seal to protect electrical enclosures
- Mounts up to 11/32 in. thickness
- High power handling
- Mate with EMBKT-016SS to convert mobile ground plane independent antennas for base station, fixed point applications

**EM-BSA001
NMO to N Type Jack**



Frequency Band	0 to 3000 MHz
VSWR	<1.2:1
Powering Rating	200 W
Overall Length	1.54 in. (39mm)

Mounting Brackets for Mirror and Mast Installations



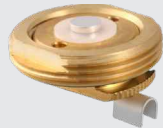
Stainless Steel, Right Angle Mount

- Accommodates 5/8 or 3/4 inch thru hole mounting for Bulkhead N Type, fixed station antennas
- Mate with EM-BSA001 to convert mobile ground plane independent antennas for base station, fixed point applications

	EMBKT-016SS	EMBKT-019SS
Bracket Material	Stainless Steel	
Mounting Hole Size	5/8 inch	3/4 inch

NMO 3/4" Hole Mount Assembly

**EM-M11001
NMO to N Type Jack**



- Low profile
- Ease of installation: Designed for a one-man installation from above
- All brass components with silver plated contact
- Heavy-duty mounting claw for reliable contact and ground connections
- For RG-58/U and 195 cable types



**EM-MTR11001
Thick Panel**

Up to
1/2 in. (12.7mm)
thickness

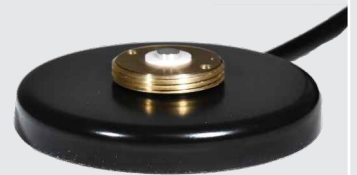
- Self-adjusting NMO locking nut eliminates guesswork and decreases installation time
- All brass and stainless steel components for maximum reliability and corrosion resistance
- Non-rotational heavy-duty centering washer ensures perfect hole alignment while optimizing non-slip clamping pressure

Attached Cable Models	Standard Low Profile		Thick Panel Series	
	EM-M11001-058	EM-M11001-195	EM-MTR11001-058	EM-MTR11001-195
Frequency Band	30-1000 MHz			
VSWR	1.5:1 typical		<1.3:1 typical	
Powering Rating	100 W @ 1000 MHz		150 W for VHF 100 W for 700-1000 MHz	
Cable Type	RG-58/U	Low Loss 195	RG-58/U	Low Loss 195
Cable Length	17 ft. (5.1 m) standard length; 35 ft (10.67 m) available			
Connector	Sold separately			
Mounting Material	Brass		Brass and stainless steel with bright nickel finish	

Magnet Mount

**EM-MAG-058
Magnet Mount**

- Magnet Mount Base with NMO mount



	EM-MAG-058	EM-MAG-195
Frequency Band	Up to 1000 MHz	
Magnetic Pull Force Retention	>30 lb (13.6 kg), includes protective UHMW PE pad	
Material Finish	High strength 14 ga steel, black powder coat	
Mounting App	NMO mount	
Connector	Sold Separately	
Cable	RG-58/U 17 ft (5.1 m)	LL 195 type 17 ft (5.1 m)

**EM-MAG-058-HD
Heavy Duty Magnet Mount**

- All black, low-profile, 3 in dia.
- Magnetic Base: Heavy-duty 14ga Steel
- Surface Protection: Optional rubber boot



	EM-MAG-058-HD	EM-MAG-195-HD
Frequency Band	Up to 1000 MHz	
Magnetic Pull Force Retention	>50 lb (22.7 kg), includes optional rubber boot	
Material Finish	High strength 14 ga steel, black powder coat	
Mounting App	NMO mount	
Connector	Sold Separately	
Cable	RG-58/U 17 ft (5.1 m)	LL 195 type 17 ft (5.1 m)

Portable Antennas

VHF (LOW)

FREQUENCY
50 ± 0.5 MHz
VSWR
2:1
LENGTH
7.05"/179mm
CONNECTOR
BP
APPLICATION
WAP Indoor



EM-P90008
Unity Gain

FREQUENCY
75 ± 0.25 MHz
VSWR
1.5:1
LENGTH
8.46"/215mm
CONNECTOR
BP
APPLICATION
WAP Indoor



EM-P90012
Unity Gain

UHF

FREQUENCY
450-470 MHz
VSWR
2:1
BANDWIDTH
20 MHz
LENGTH
8.0"/203mm
CONNECTOR
0° & 90°, BP
APPLICATION
WAP Indoor



EM-P90009
2 dBi Gain

FREQUENCY
806-869 MHz
VSWR
2:1
BANDWIDTH
63 MHz
LENGTH
9.8"/248mm
CONNECTOR
0° & 90°, BP
APPLICATION
WAP Indoor



EM-P90107
2 dBi Gain

VHF (HIGH)

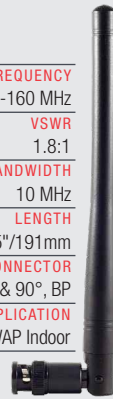
FREQUENCY
118-174 MHz Tunable
VSWR
2:1
LENGTH
8.43"/214mm
CONNECTOR
BP
APPLICATION
WAP Indoor

Adjustable Telescopic



EM-P90007
Unity Gain

FREQUENCY
150-160 MHz
VSWR
1.8:1
BANDWIDTH
10 MHz
LENGTH
7.5"/191mm
CONNECTOR
0° & 90°, BP
APPLICATION
WAP Indoor



EM-P90011
2 dBi Gain

FREQUENCY
136-174 MHz
VSWR
2:1
BANDWIDTH
38 MHz
LENGTH
7.9"/200mm
CONNECTOR
SM, SF, SFK
APPLICATION
Portable Radio



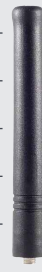
EM-P90810
Unity Gain

FREQUENCY
150-174 MHz
VSWR
2:1
BANDWIDTH
24 MHz
LENGTH
11.19"/284mm
CONNECTOR
SM, SF, SFK
APPLICATION
Portable Radio



EM-P90918
Unity Gain

FREQUENCY
148-162 MHz
VSWR
2.5:1
BANDWIDTH
14 MHz
LENGTH
4.25"/108mm
CONNECTOR
SM, SF
APPLICATION
Portable Radio



EM-P90013
Unity Gain

FREQUENCY
136-174 MHz Tunable
VSWR
2:1
BANDWIDTH
20 MHz
LENGTH
14.5"/368mm
CONNECTOR
N, BNC
APPLICATION
Portable Radio /WAP Indoor

Field Tunable



EM-P90014
Unity Gain

700/800 MHz

FREQUENCY
698-870 MHz
VSWR
2:1
BANDWIDTH
172 MHz
LENGTH
6.6"/168mm
max.
CONNECTOR
MD, SF, SM
APPLICATION
Portable Radio



EM-P90110
1/2 Wave / 3 dBi Gain

FREQUENCY
698-870 MHz
VSWR
2:1
BANDWIDTH
172 MHz
LENGTH
4.4"/111mm
max.
CONNECTOR
MD, SF, SFK
APPLICATION
Portable Radio



EM-P90111
1/4 Wave / 2 dBi Gain

900 MHz

FREQUENCY
902-928 MHz
VSWR
2:1
BANDWIDTH
26 MHz
LENGTH
7.7"/196mm
CONNECTOR
TR
APPLICATION
WAP Indoor



EM-P90102
2 dBi Gain

FREQUENCY
890-960 MHz
VSWR
2:1
BANDWIDTH
70 MHz
LENGTH
5.9"/150mm
CONNECTOR
MD, SF, SFK
APPLICATION
Portable Radio



EM-P90220
3 dBi Gain

FREQUENCY
890-960 MHz
VSWR
2:1
BANDWIDTH
70 MHz
LENGTH
7.7"/196mm
CONNECTOR
Straight Type SR
APPLICATION
WAP Indoor/ Outdoor



EM-P90112
2 dBi Gain

FREQUENCY
890-960 MHz
VSWR
2:1
BANDWIDTH
70 MHz
LENGTH
6.3"/160mm
CONNECTOR
RA Type- SM, SR, BP, TP, TR
APPLICATION
WAP Indoor/ Outdoor



EM-P90113
2.5 dBi Gain

FREQUENCY
890-960 MHz
VSWR
2:1
BANDWIDTH
70 MHz
LENGTH
7.5"/190mm
CONNECTOR
0 & 90° Type SM, SR, BP, TP, TR
APPLICATION
WAP Indoor



EM-P90114
2 dBi Gain



Wi-Fi / WAN

FREQUENCY
2.4-2.5 GHz

VSWR
2:1

BANDWIDTH
100 MHz

LENGTH
5.38"/137mm

CONNECTOR
SR

APPLICATION
WAP Indoor



EM-P90402
2 dBi Gain

FREQUENCY
2.4-2.5 GHz
4.9-5.35 GHz
5.725-5.85 GHz

VSWR
2:1

BANDWIDTH
100 MHz
450 MHz
125 MHz

LENGTH
4.22"/108mm

CONNECTOR
0 & 90° Type
SM, SR

APPLICATION
WAP Indoor/
Outdoor



EM-P92301
0 dBi Gain

FREQUENCY
2.4-2.5 GHz
4.9-5.35 GHz
5.725-5.85 GHz

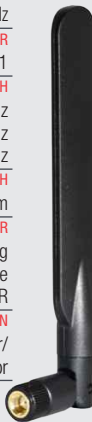
VSWR
2:1

BANDWIDTH
100 MHz
450 MHz
125 MHz

LENGTH
6.4"/163 mm

CONNECTOR
Articulating
0 & 90° Type
SR

APPLICATION
WAP Indoor/
Outdoor



EM-P92302-SR
0 dBi Gain

LTE

FREQUENCY
698-960 MHz
1710-2700 MHz

VSWR
2:1

BANDWIDTH
262 MHz
990 MHz

LENGTH
7.32"/186mm

CONNECTOR
0 & 90° Type
SM, SR

APPLICATION
WAP Indoor



EM-P92202
2 dBi, 3 dBi Gain

Multi-Band

FREQUENCY
135 MHz
750 MHz

VSWR
2:1

LENGTH
7.87"/200mm

CONNECTOR
SM

APPLICATION
Portable Radio



EM-P91101
Unity Gain

FREQUENCY
380-520 MHz
698-870 MHz

VSWR
2:1

BANDWIDTH
140 MHz
172 MHz

LENGTH
6.6"/168mm
max.

CONNECTOR
MD, SF, SFK,
SM

APPLICATION
Portable Radio



EM-P91201
2 dBi Gain

FREQUENCY
824-960 MHz
1710-2170 MHz

VSWR
2:1

BANDWIDTH
136 MHz
460 MHz

LENGTH
5.81"/148mm

CONNECTOR
NP, SM, SR

APPLICATION
WAP Indoor



EM-P92101
2 dBi Gain

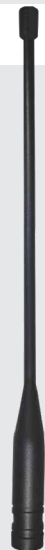
FREQUENCY
136-174 MHz
380-512 MHz
763-940 MHz

VSWR
<2:1 typical; <3:1
@ band edges

LENGTH
10.6"/269mm

CONNECTOR
SF (SMA Jack)

APPLICATION
Portable Radio



EM-P92401-SF
Unity Gain

FREQUENCY
136-174 MHz
1575-1610 MHz
GPS/GLNСС

VSWR
2.5:1

LENGTH
10.35"/269mm

CONNECTOR
SF (SMA Jack)

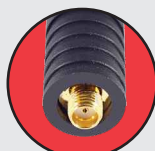
APPLICATION
Portable Radio



EM-P92402-SF
Unity (VHF)
2 dBi (GPS/GLNСС) Gain



MD
M7x1)



SFK
SMA (f) Kenwood™ Type



SF
SMA (f) Motorola™ Type



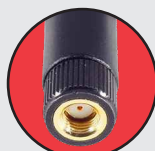
SM
SMA (m)



BP
BNC (m)



NP
N (m)



SR
SMA RP



TP
TNC (m)



TR
TNC RP Plug



Straight



Right Angle
0° & 90°



Right Angle
Fixed (RA)

Replacement Parts

Replacement Bases



EM6A-01RP

Replacement base for
EM-M & MFLX-M10001
EM-M11003
EM-M11004
EM-M11005
EM-M11008
EM-MX All Models



EM6A-04RP

Replacement base for
EM-M10004
EMFLX-M10004
EM-M10014
EMFLX-M10014

EM6A-05RP

Replacement base for
EM-M10003
EMFLX-M10003
EM-M10007
EMFLX-M10007



EM6A-06RP

Replacement base for
EM-M10003-GPI
EMFLX-M10003-GPI
EM-M10007-GPI
EMFLX-M10007-GPI



EM6A-07RP

Replacement base for
EM-M10004-GPI
EMFLX-M10004-GPI
EM-M10014-GPI
EMFLX-M10014-GPI



EM6A-11RP

Replacement base for
EMFLX-M10008-WB



Base O-Ring

EM9-02RP

(25 pack) fits all EM6A type bases

Replacement Springs

EMFLX3A-01RP

Black Molded Poly Spring mates with any base using a standard 1/4 - 20 thread and accepts a whip diameter of 0.1 inch (2.5 mm).

Replacement for
EMFLX-M10001
EMFLX-M10003
EMFLX-M10003-GPI
EMFLX-M10004
EMFLX-M10004-GPI
EMFLX-M10014
EMFLX-M10014-GPI



EM3A-01RP

Black Chrome SS Spring mates with any base using a standard 1/4 - 20 thread and accepts a whip diameter of 0.1 inch (2.5 mm).

Replacement for
EM-M10001
EM-M10003
EM-M10003-GPI
EM-M10004
EM-M10004-GPI
EM-M10014
EM-M10014-GPI



EMFLX3A-02RP

Same as above but accepts a whip diameter of 3.0 mm.

Replacement for EMFLX-M10007

EM3A-02RP

Same as above but accepts a whip diameter of 3.0 mm.

Replacement for EM-M10007

Connectors • All connectors fit either RG-58/U or 195 Type Cable

- PL-259 connector solder center pin
- Crimp sleeve (crimping tool required)



EMPL259-CRIMP

- Mini-UHF male plug connector



EMMP-058

- BNC male plug connector



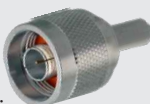
EMBP-058

- SMA male plug connector



EMSP-058

- N Plug (male) connector
- Nickel plated body
- Gold-plated centerpin
- Crimp/solder



EMNP-058

- TNC male plug connector



EMTP-058

Replacement Whips

EM2A-08RP	Whip 30" black chrome for EM-M10001 & EMFLX-M10001
EM2A-11RP	Whip 55" tapered black chrome for EM-M10004, EM-M10004-GPI, EMFLX-M10004, EMFLX-M10004-GPI
EM2A-15RP	Whip 40" tapered open coil, UHF 5dB gain for EM-M10007 & EMFLX-M10007
EM2A-16RP	Whip 46" tapered black chrome, for EM-M10014, EM-M10014-GPI, EMFLX-M10014, EMFLX-M10014-GPI
EM2A-17RP	Whip 15" black chrome for EM-M10003, EMFLX-M10003, EM-M10003-GPI & EMFLX-M10003-GPI
EM2A-152RP	Whip assembly "X"-Nut™ model EM-MX0152
EM2A-450RP	Whip assembly "X"-Nut model EM-MX0450
EM2A-746RP	Whip assembly "X"-Nut model EM-MX0746
EM2A-890RP	Whip assembly "X"-Nut model EM-MX0890
EM2A-108-FTRP	Whip assembly "X"-Nut model EM-MX0108-FT

EM2A-08RP

EM2A-11RP

EM2A-15RP

EM2A-108-FTRP

EM2A-152RP

EM2A-162RP

EM2A-406RP

EM2A-450RP

EM2A-746RP

EM2A-890RP

LIMITED WARRANTY STATEMENT
E/M WAVE INCORPORATED

WARRANTY: Seller warrants for a period of two years from date of invoice that (a) all of its products will be free from defects in material and workmanship; (b) products furnished will conform to buyer's express written specifications to the extent accepted and agreed to by the Seller. Liability under these warranties is limited solely to the repair or, at Seller's option, replacement of or credit for any products found to be nonconforming or defective under normal use and service provided, however, that Buyer shall have given written notice to Seller describing in detail all alleged defects or nonconformity and such notice shall have been received by Seller within the applicable warranty period. These warranties shall not apply to products, which have been repaired or altered by persons other than Seller, or to defects that have been caused by misuse or abuse after delivery.



Please scan and visit our website for:

- Terms and Conditions of Sales
- Credit Application

<https://www.emwaveinc.com/documents>

What Sets Us Apart from the Competition?

"X"-NUT

Exploded view showing all components

Whip can easily be removed for carwash

Exclusive built-in gasket seal to protect vehicle body and ensure weatherproof seal

O-ring for base-to-mount seal

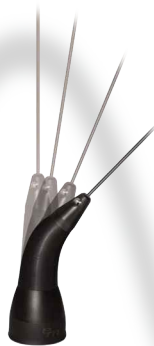
U.S. Patent 9,520,640 Capacitive Coupled Design

Flexible Elastomeric Polymer Housing



Duplexer

Augments high performance antenna operation for "all-band" LMR applications



Advanced Polymer Formula...

EM-FLEX™ poly springs

Outperform and Outlast Conventional Steel Springs

- Combines flexible strength with mechanical durability
- Will not tarnish, rust, or corrode
- Provides weatherproof braid protection for Extended Life and Optimum Performance
- Delivers aesthetically pleasing all black appearance

EM-M20007 Poly-Pro Antenna for LTE and LMR 700/800 MHz NMO Applications

- Simultaneously optimizes LTE and LMR signal performance within a low-profile tapered form
- Flexible elastomeric polymer housing resists high speed impact damage from debris and low hanging obstructions
- Dust and O-ring seals for reliable high pressure car wash and ingress resistance (IP66 & IP68)
- Rugged "all brass" construction with black chrome finish – silver plated contact maximizing conductivity and system reliability



Multi-Purpose NMO WiFi/GPS Combination 3/4" Hole Mount Assembly



Multi-Band GPS/GLNSS (L1) Timing Antenna

E/M Wave, Inc. engineers and markets a growing line of unique mobile and fixed station communications antenna products. Our primary focus is to maximize the **Antenna Value** in every product to meet or exceed customer expectations! We incorporate unique quality features that deliver more **Value** that our customers can understand, experience, and appreciate. These are the attributes that set us apart from the competition. It's a **Quality** effort, and it's the right thing to do!



Scan QR code
To download catalog



www.emwaveinc.com

6111 Carey Dr. • Unit 1
Valley View, OH 44125

216-453-1160 • sales@emwaveinc.com