

Specifications

General

Frequency Range	VHF1:136-174MHz UHF1:400-470MHz UHF3:350-400MHz
Channel Capacity	32
Channel Space	12.5 KHz/25KHz
Dimensions(H*W*D)	44*483*375mm
Weight	7.6Kg
LCD	1.8 inch 128x160 TFT color LCD
Operating Voltage	DC 13.6V±15% AC 100 - 240VA
Current Drain	<1A(Standby) <10A(Transmit)
Frequency Stability	0.5ppm
Continuous duty Cycle	100%

Transmitter

Frequency Stability	0.5ppm
RF Power Output	High Power Model: 45~50W Low Power Model: 25W
Digital Modulation	7K60FXD(Data Only) 7K60FXW(Data and Voice)
FM Modulation	16K C F3E@25KHz / 11K C F3E@12.5KHz
4FSK Modulation Accuracy	5%
4FSK BER	0%
4FSK and Magnitude Error	5%/1%
Adjacent Channel Power	70dB@25KHz / 60dB@12.5KHz
Conducted and Radiated Emission	-36dBm <1GHz / -30dBm >1GHz
Transmission Deviation limits	5KHz@25KHz / 2.5KHz@12.5KHz
Audio Distortion	3%
Hum and Noise	45dB@25KHz / 40dB@12.5KHz
Audio Response	+1dB ~ 3dB

Receiver

Digital Sensitivity	-120dBm / BER 5% -116dBm / BER 1%
Digital Dynamic Faded Sensitivity (100KM/H& 8KM/H Rayleigh Fading)	-104dBm
Analog Sensitivity	-120dBm / 12dB SINAD
Intermodulation	75dB (TIA603) / 70dB(ETSI)
Blocking	95dB (TIA603 & ETSI)
Spurious Response Rejection	75dB (TIA603 & ETSI)
Selectivity	75dB@25 KHz(TIA603&ETSI) /65dB@12.5KHz(TIA603&ETSI)
Conducted Spurious Emission	-57dBm
Rated Audio Power Output	1W
Rated Audio Distortion	3%
Hum and Noise	45dB @25KHz / 40dB@12.5KHz
Audio Response	+1dB ~ -3dB
Digital Vocoder Type	AMBE++ / NVOC
Digital Protocol	ETSI-TS102 361 -1, -2,-3,-4

Reliability

Operating Temperature	-30 ~ +60 C
Storage Temperature	-40 ~ +85 C
Shock&Vibration	MIL-STD-810 C/D/E/F/G standard
ESD	IEC 61000-4-2(level 4) ±8KV(Contact) , ±15KV(Air)
Surge Immunity Test (EN 6100-4-5)	Differential Mode:6KV Common Mode:6KV

APPLICABLE MIL-STD

MIL Standard	810C Methods/ Procedures	810D Methods/ Procedures	810E Methods/ Procedures	810F Methods/ Procedures	810G Methods/ Procedures
Low Pressure	500.1/ I	500.2/ I, II	500.3/ I, II	500.4/ I, II	500.5/ I, II
High Temperature	501.1/ I, II	501.2/ I, II	501.3/ I, II	501.4/ I, II	501.5/ I, II
Low Temperature	502.1/ I	502.2/ I, II	502.3/ I, II	502.4/ I, II	502.5/ I, II
Temp. Shock	503.1/ I	503.2/ I	503.3/ I	503.4/ I, II	503.5/ I
Solar Radiation	505.1/ I	505.2/ I	505.3/ I	505.4/ I	505.5/ I
Rain**	506.1/ I, II	506.2/ I, II	506.3/ I, II	506.4/ I, III	506.5/ I, III
Humidity	507.1/ I, II	507.2/ II, III	507.3/ II, III	507.4	507.5/ II
Salt Fog	509.1/ I	509.2/ I	509.3/ I	509.4	509.5
Dust	510.1/ I	510.2/ I	510.3/ I	510.4/ I, III	510.5/ I
Vibration	514.2/ VIII, X	514.3/ I	514.4/ I	514.5/ I	514.6/ I
Shock	516.2/ I, II, V	516.3/ I, IV, V*2	516.4/ I, IV, V*2	516.5/ I, IV, V*2	516.6/ I, IV, V*2
Immersion**3	—	—	—	512.4/ I	512.5/ I

SHENZHEN EXCERA TECHNOLOGY CO.,LTD.
www.excera.com.cn



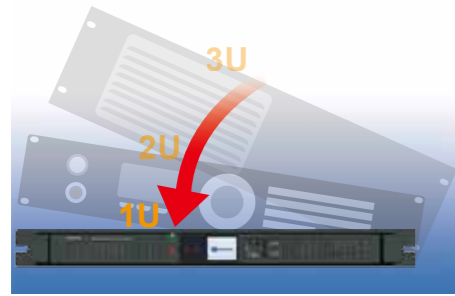
DMR Basestation Repeater ER9000

- ◆ 19 Inches,1U Cabinet Size Design with Power Supply Inside
- ◆ 100% Continuous Duty Cycle with 50W High Power Output
- ◆ Built-in Auto tune Duplexer
- ◆ Upgrade to DMR Trunking and Simulcast Basestation Transceiver



Advantage Features

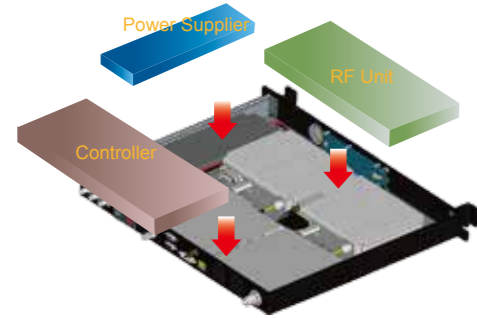
19 inches, 1U standard cabinet size design with power supplier inside.



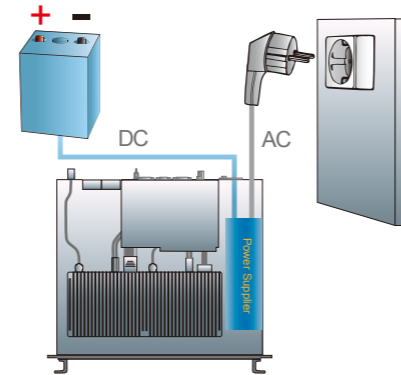
Unique 100% duty cycle at 50W high power output in 1U cabinet.



100000hours MTBF performance based on military modular design with high reliability.



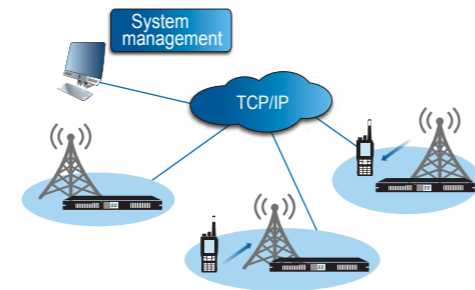
Supports AC/DC power supply and switches to the backup battery automatically when AC power is interrupted with the built-in float circuit design.



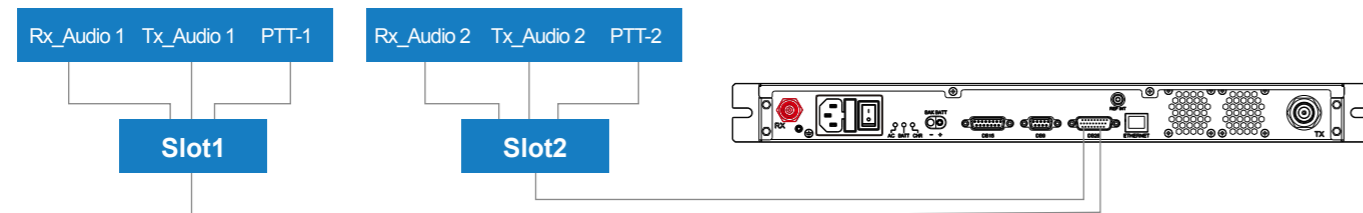
Supports analog and digital dual-mode, and automatic switching between analog and digital channels.



Supports multi-site IP connection allowing wide area coverage and cross bands communication.



Digital dual slots audio streaming allow the third party for application expansion via the rear accessory port.



Advantage Features

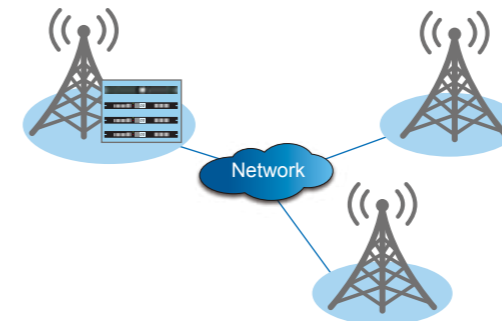
Extensive API supports the user or the third party to develop supplemental application.



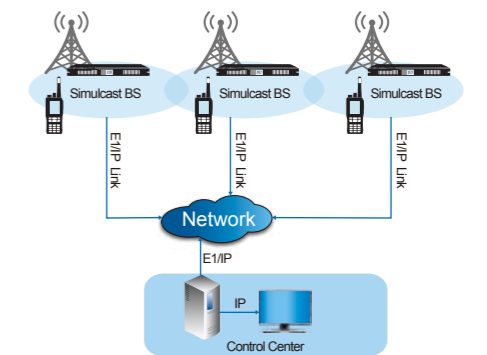
Supports remote diagnosis, maintenance and software upgrade.



Can be upgrade to DMR trunking basestation transceiver by software (optional).



Can be upgrade to DMR simulcast basestation transceiver by software (optional).



Accessories

Auto Tune Duplexer EDU001	Fiberglass Antenna EAD000001	Power Cord EPWCAZ01	USB Programming Cable EPC03	Fuse EACC001
AC Power Cable EPWCDZ01	Sucking Antenna EAM353701			

Excera retains right to change the products design and specification without prior notice. Parts supply for the market is different, please contact the local agent. Promotional photos are for reference only. All products as per the material subjects.